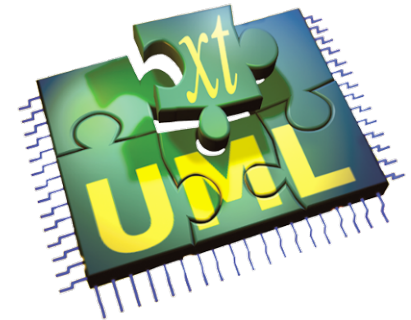


The xtUML method – Configuration Management

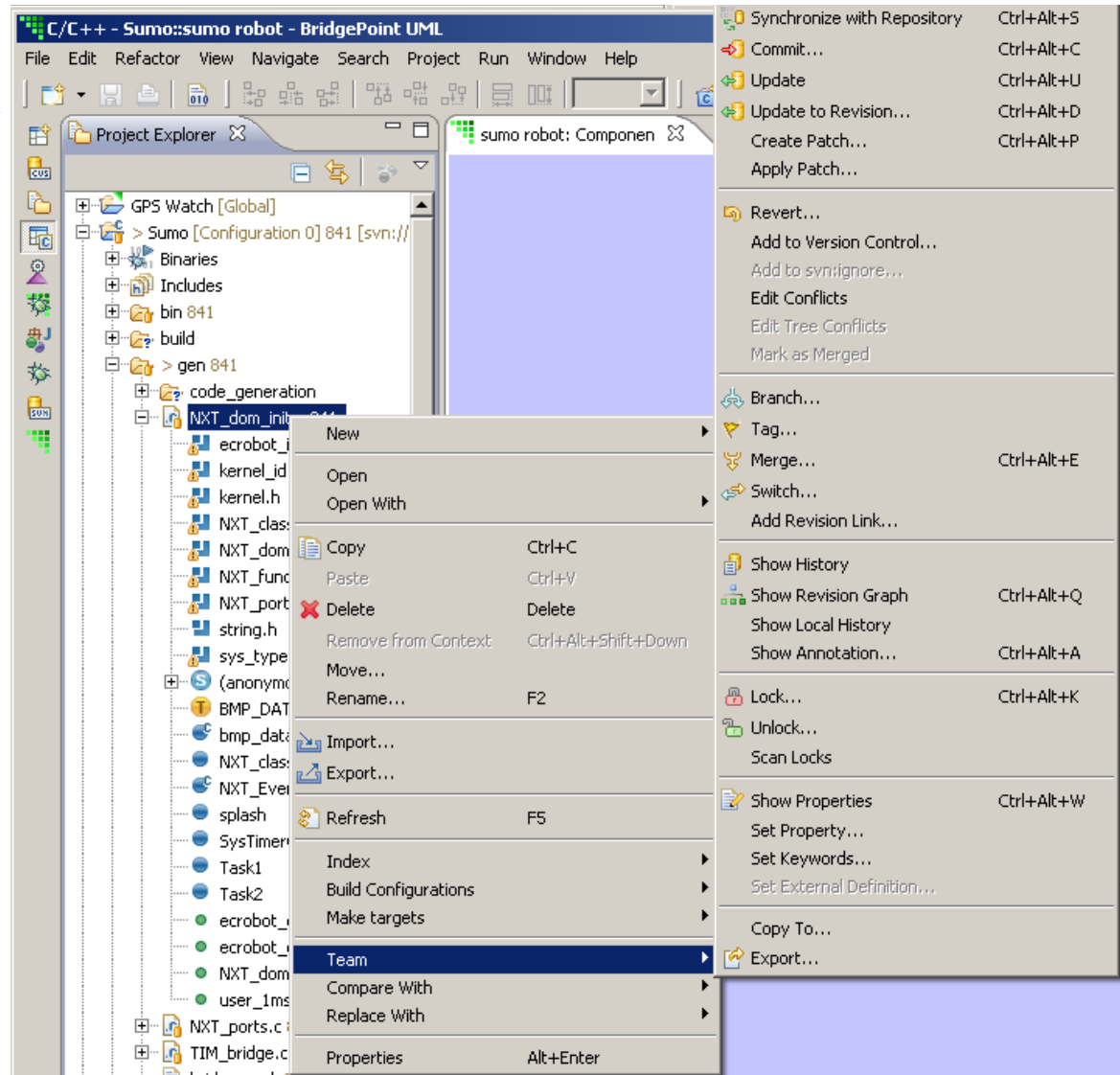
- ◆ **Analysis** – questioning, thinking, sketching...
 - Informal UML diagrams
 - use case, sequence, ...
- ◆ **Modeling** – formalizing the analysis:
 - Component Diagrams (partitioning/interfaces)
 - Class Diagrams (data)
 - **State Machines (control)**
 - Activities (processing)
- ◆ **Verification**
 - Interpretive Model Execution
- ◆ **Code generation**
 - Template and Rule-Based Translation

Relevant to all
method steps



The Team Interface

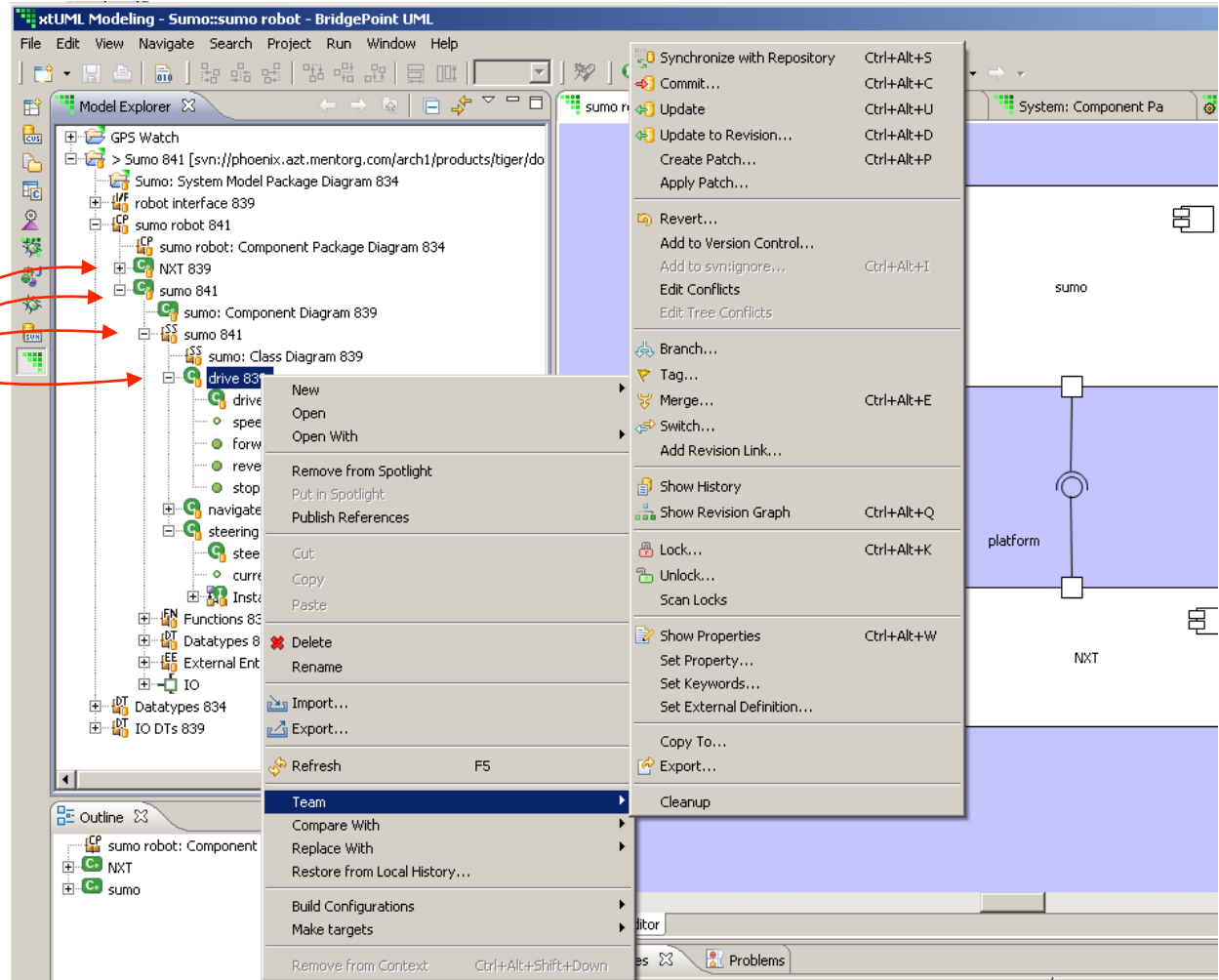
- ◆ **Team: Eclipse's generic Version Control interface**
- ◆ **Team typically operates at the file level, supporting:**
 - **Revision display and selection – directly in the Resource and Project Explorer views.**
 - **Compare and merge – in dedicated merge editors**
 - **Branch management – in dedicated Synchronize view**



BridgePoint and Team

◆ Bridgepoint uses the file system for model storage

Bridgepoint interfaces with Team by providing a thin layer over the file system where appropriate



BridgePoint and Team

- ◆ **BridgePoint and Team work together, operating at the *model element* level, supporting:**
 - **Revision display and selection – directly in the Model Explorer view where you need it.**
 - **Compare – in a dedicated compare editor**
 - **Branch management – in standard Synchronize view**

Comparing Model Revisions

The screenshot shows the BridgePoint Model Comparison tool interface. The top pane displays a tree view of the model structure under 'navigate', showing nodes for 'N1/attacking', 'N3/attacking', and 'N4/attacking'. The bottom pane shows a 'Text Compare' window with two columns: 'Local File (841)' and 'Remote File (850 [skjellbe])'. The comparison highlights differences between the two revisions, showing state event matrix entries for 'Cant Happen' and 'Event Ignored' states.

Local File (841)

```

Cant Happen
  Description :
  State Event Matrix Entry
  In : attacking
  Triggered By : N2: line
  To : retreating
  State Event Matrix Entry
  In : attacking
  Triggered By : N3: leftBumper
  To : null
Cant Happen
  Description :
  State Event Matrix Entry
  In : attacking
  Triggered By : N4: rightBumper
  To : null
Cant Happen
  Description :
  State Event Matrix Entry
  In : retreating
  
```

Remote File (850 [skjellbe])

```

Event Ignored
  Description :
  State Event Matrix Entry
  In : attacking
  Triggered By : N2: line
  To : retreating
  State Event Matrix Entry
  In : attacking
  Triggered By : N3: leftBumper
  To : null
Event Ignored
  Description :
  State Event Matrix Entry
  In : attacking
  Triggered By : N4: rightBumper
  To : null
Event Ignored
  Description :
  State Event Matrix Entry
  In : retreating
  
```

Revision History Table:

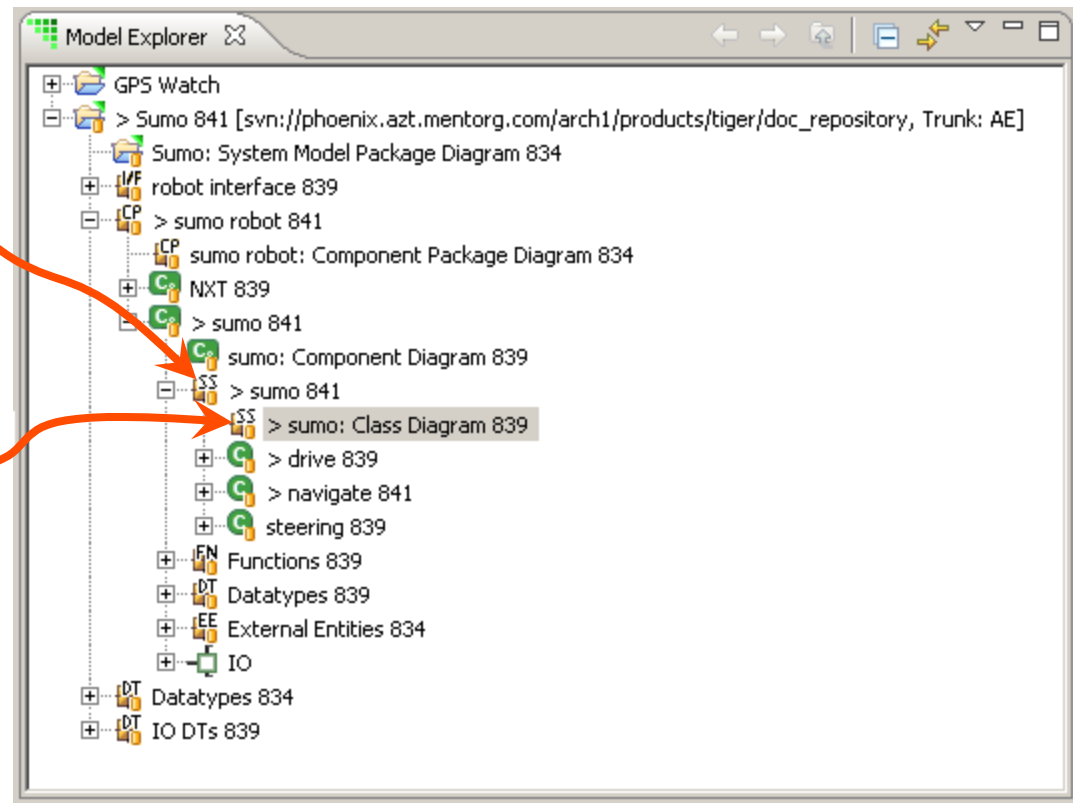
Revision	Date	Cha...	Author	Comment
850	9/13/10 1:08 PM	3	skjellbe	Job: dts0100678243...
*841	9/8/10 2:32 PM	11	skjellbe	Job: dts0100678243...
839	9/7/10 4:28 PM	29	skjellbe	Job: dts0100678243...
834	8/24/10 3:51 PM	79	skjellbe	Job: dts0100678243...

Why does the Model Explorer show an entry twice?

◆ Allows you control over the extent of a commit

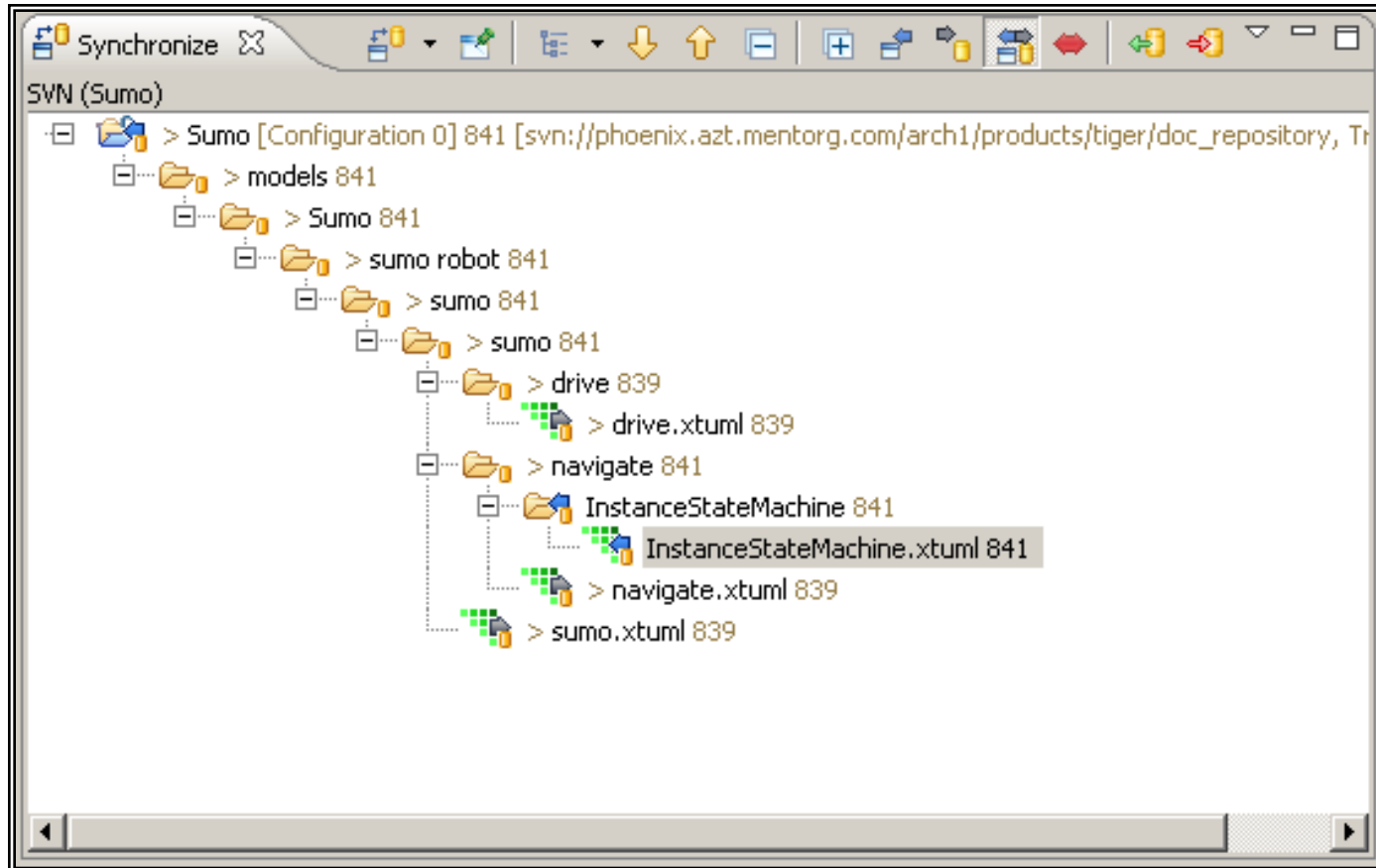
Commit here to upload changes made to **the whole sumo subsystem**

'>' highlights changed model elements

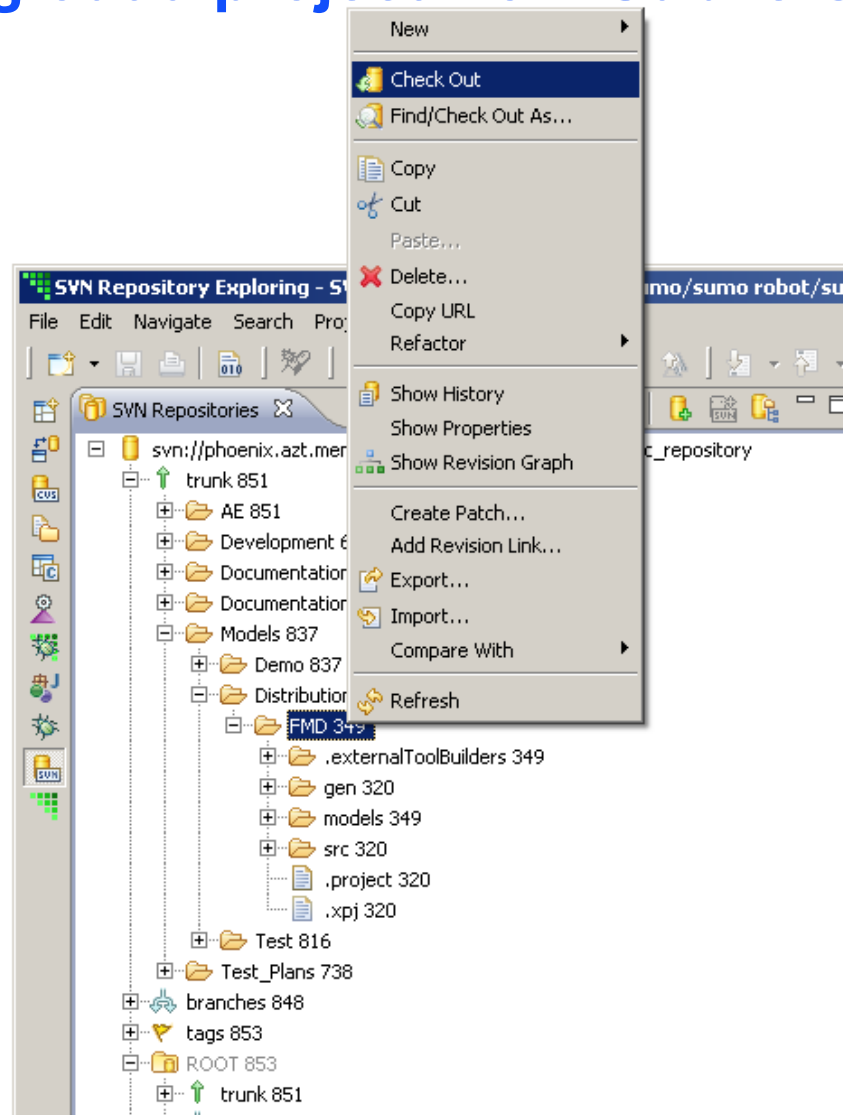


Commit here to upload changes to **just the sumo subsystem diagram itself** (i.e. changes to the drive and navigate classes are **not** up loaded)

Synchronize View

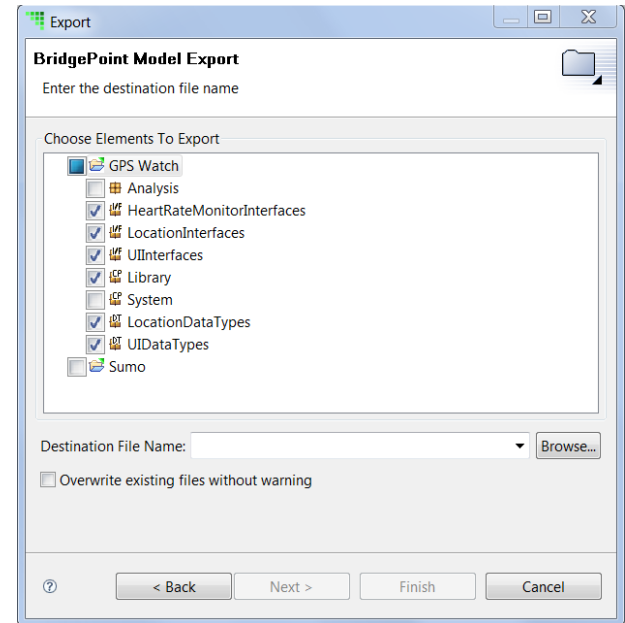


Checking out a project from Subversion



BridgePoint Model Export / Import

- ◆ Exports only models – no other project artifacts
- ◆ Allows portions of the model to be exported
- ◆ Model are imported to *existing* BridgePoint projects



Generic Eclipse Export / Import

- ◆ Exports imports entire projects with all artifacts
- ◆ Non-intuitive flow:

